



## IBM Student Opportunities

Grace Anstis

# Hi, I'm Grace.

I'm a Financial Transformation  
Consultant at IBM.

What does that mean?

I work with large companies to enhance  
their finance departments and processes  
with technology including AI, cloud,  
blockchain, automation etc.



# Ex-Parmiterian & University of Exeter graduate.

I left Parmiter's in 2014 with A Levels in Economics, English Literature & Mathematics, then studied Economics and Finance with Industrial Experience (at IBM) at the University of Exeter.

My placement year at IBM was in Sales Operations – lots of spreadsheets and reporting to management on current performance of the team against sales targets! I then joined the IBM graduate scheme in 2018 as a consultant. Feel free to add me on LinkedIn (<https://www.linkedin.com/in/grace-anstis-b7177264/>) or email me at [grace.Anstis@ibm.com](mailto:grace.Anstis@ibm.com) to hear more about my journey and how you can do similar if this interests you.

# IBM School Leaver Schemes

**Apprenticeships**

**Degree  
Apprenticeships**

**Futures  
Placement  
Scheme**

12 months

Details on the types of roles we offer can be found at:

<https://www.ibm.com/uk-en/employment/entrylevel/>



# What do we look for?

Leadership  
and ability to  
take  
ownership

Creative  
problem  
solving

Adaptability

Teamwork

Passion for  
the business

Client Focus

Drive to  
achieve

Communication

# IBM is...

... a global cloud platform and cognitive solutions company,  
operating in **more than 175 countries**

... serving **clients around the world since 1911**

... an **integral part of the UK economy**

... one of the **largest technology employers** in the country



IBM is....  
for everyone,  
every day



# Driving invention and innovation





Preparing you,  
whatever the  
weather



The Weather  
Company:  
2.2 billion local  
forecasts delivering  
content for Apple,  
Facebook, Google,  
Microsoft, Twitter,  
Yahoo! and more

1994: IBM unveils  
Simon, the world's  
first "smartphone"

Chip-level security  
keeping you safe  
from hackers



The magnetic data  
strip: invented by an  
IBMer in the 1960s

A person with blonde hair, wearing a dark green jacket, is seen from the side, interacting with an ATM. The person's hand is near the card reader. The ATM is a dark grey machine with a screen and a keypad. The background is slightly blurred, showing an indoor setting.

Serving 1.2 million  
transactions per second

1972: The ATM makes  
its High Street debut.  
Developed by IBM  
and Lloyds Bank

1989: IBM's first  
release of JCOP,  
the protocol that  
enables secure  
Chip & PIN  
transactions

IBM CICS. Fundamental to digital  
transactions around the world.

Developed at IBM Hursley.

“Probably the most successful  
software of all time.”

– *Personal Computer World*



We are a company  
of the future



WORLD  
ECONOMIC  
FORUM

Transforming  
businesses

Supporting  
public services

Helping  
people and  
communities

1

2

3

Transforming  
businesses

1

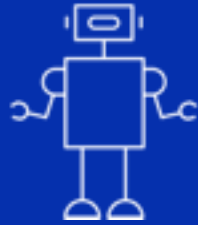
# Transforming businesses



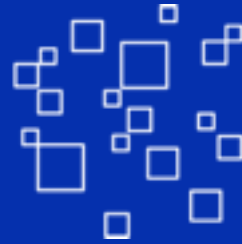
Cloud



Blockchain



AI



Internet of Things



SaaS



Cyber security



Supporting  
public services

2



# Transforming access to government services

Supporting  
and protecting  
energy, defence  
and emergency  
services



Helping  
people and  
communities

3





World Community Grid:  
20,000+ UK and Ireland  
members



Machine Learning for  
Kids: AI teaching aid  
conceived by a UK IBMer



P-TECH: first British Isles roll-  
out in three Dublin schools  
and four educational  
institutions in Leeds



## Diversity at IBM

IBMers speak with a diverse voice, representing more than 170 countries.

IBMers are all welcome to join communities including:

Women @ IBM

LGBT+

BAME

People with Disabilities

\*include mental health wellbeing\*

# Business Resource Groups

## What are they?

Volunteer-led communities formed within IBM, usually to unite people from similar backgrounds. They champion D&I, start initiatives (e.g. LGBT+ Allies) and host events.

## Why Join One?

- Expand your personal & professional network
- Connect with colleagues who share common interests
- Develop your professional & leadership skills
- Get access to mentoring programs
- Get access to opportunities/Exec roundtables
- Learn more about & support inclusion in IBM
- Maintain awareness of IBM's Inclusion Strategy
- Expand your knowledge base and learn from like minded people.

## The UK BRGs include:

- BAME (Black, Asian and Minority Ethnic)
- EAGLE (LGBT+)
- PwD (People with Disabilities)
- Connecting Women
- Military/Reservists



# Thank you!

# Any questions?

Follow us @IBMCareersUKI on Facebook  
and Twitter and @lifeatibm on Instagram!

[ibm.com/jobs/uk](https://ibm.com/jobs/uk)

